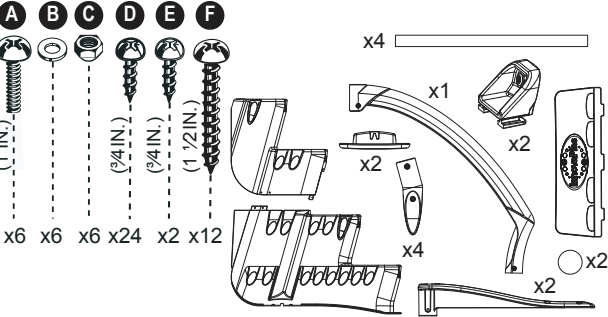


# BILTMOR 5050 WITH SELF-LATCHING 9600

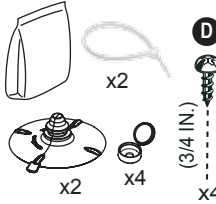
## Contents of Biltmor box SKU # 5050

### SCREW KIT 140-0067



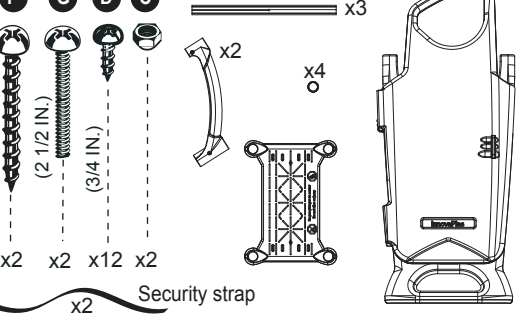
## Contents of "Riser kit" box

### SCREW KIT 140-0010



## Contents of Self-Latching box SKU # 9600

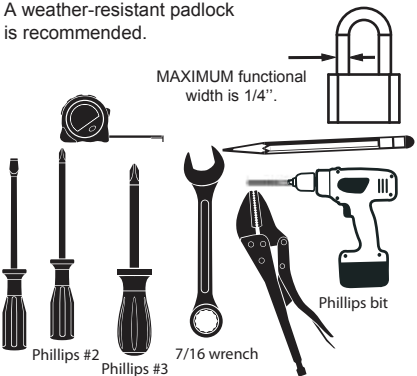
### SCREW KIT 140-0016



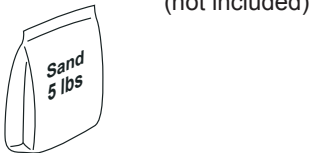
## ⚠ WARNING

- ▶ Install the step on a flat surface.
- ▶ Do not jump or dive from the step or ladder.
- ▶ Remove the step from water when temperatures drop below freezing.
- ▶ In winter, the step should be stored in an area protected from snow.
- ▶ Never lift the step by its handrails.
- ▶ Use BATTERY operated tools to avoid electric shock near water.
- ▶ Ensure no corrosive materials are added to the step or hardware kit.
- ▶ The step must be installed per manufacturer's instructions.
- ▶ File off all stripped or sharp edges before assembly to avoid injuries and liner damage.
- ▶ The manufacturer is not responsible for damages or injuries caused by improper installation or use of product.
- ▶ To ease the installation of handrails and bolts, use a screwdriver to line up the holes.
- ▶ **Maximum weight: 300 lbs / 135 kg.**

## Required tools (not included)

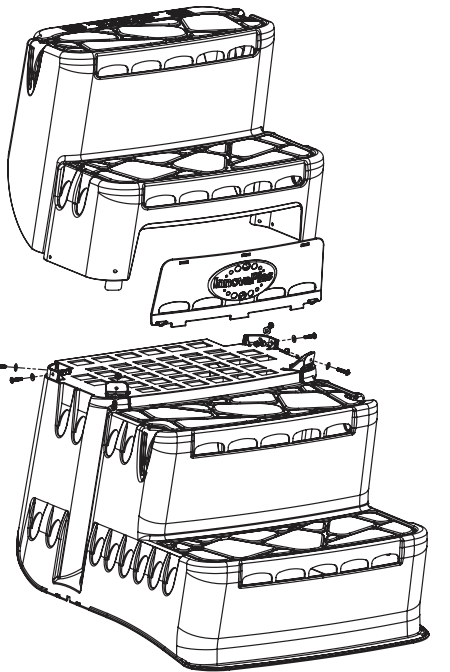
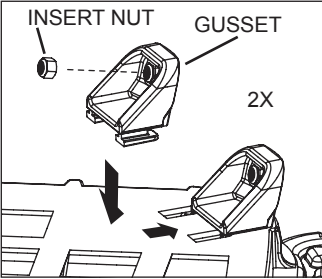
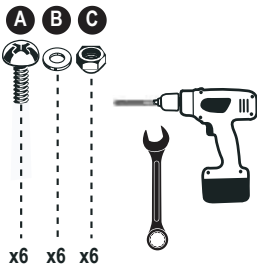


## Sand



# A

- 1) Insert the two gussets in the slots and slide them toward the corners.
- 2) Assemble the two main modules with the six screws, nuts and washers provided.
- 3) Snap the door between the top and bottom module within the slots provided.



2257 route 139  
Drummondville, Québec  
J2A 2G2

WWW.INNOVAPLAS.COM

## MANUFACTURER WARRANTY

**1 year on step and closure.**  
**1 year on hardware.**

REV. 02/07/2023

PN:

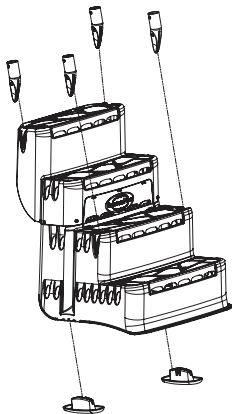
PG:1

# BILTMOR 5050 WITH SELF-LATCHING 9600

## B

1) Snap the four post ends into the step, making sure that the cylindrical part is vertical and that the ends are snapped properly in their respective housings.

2) Snap the two feet to the bottom of the step.

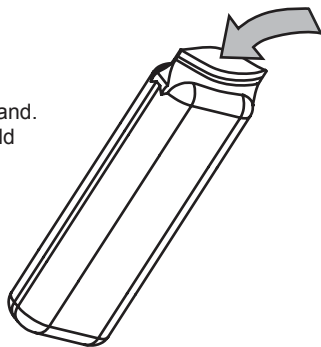


## C

1) Fill the bag provided with sand. The approximate weight should be 5 lbs.

\*Sand not included

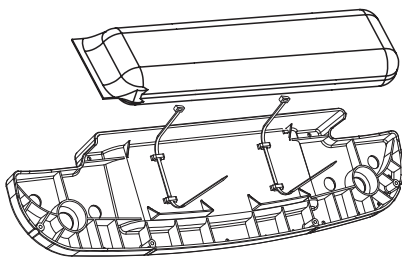
\*SAND



## D

1) Slide the two tie wraps in place and place the sand bags into the riser.

2) Fasten the tie wraps. Do not overtighten.



## E

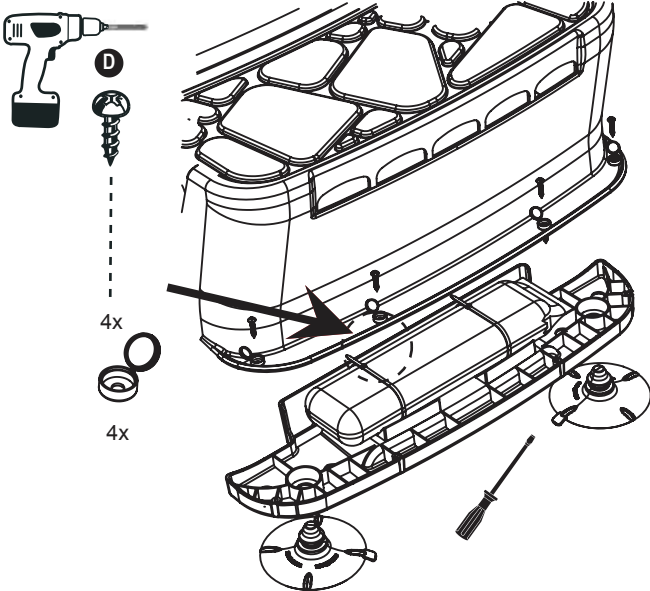
1) Insert the two step cups in the riser.\*

2) Place the riser on the ground, install the step on top of the riser and fasten with the four screws and plastic screw caps provided.

3) Snap the screw caps covers in place.



\* View step cups installation tips on YouTube:  
<https://www.youtube.com/watch?v=W5RH1VNxpu0>



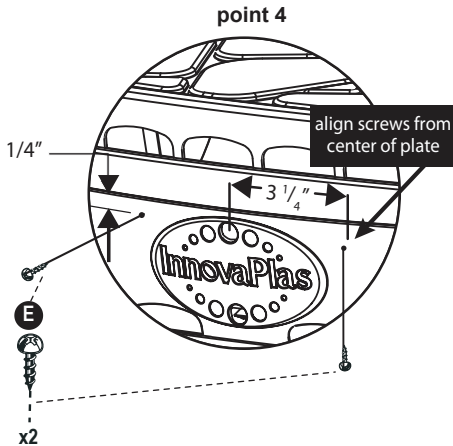
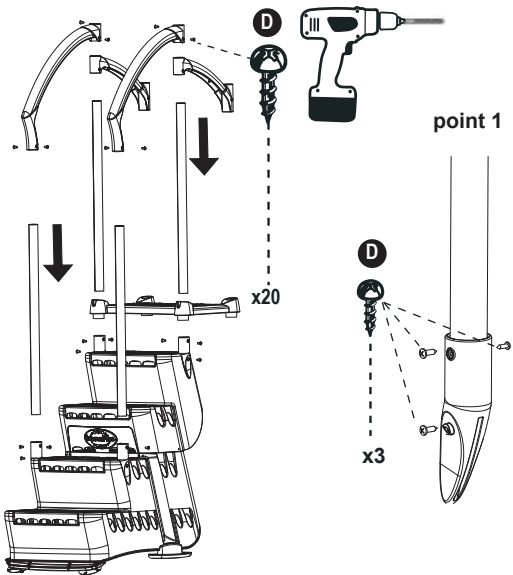
## F

1) Insert the four posts into the post ends and secure them in place with the screws provided (see right).

2) Insert the platform over the 2 rear posts.

3) Insert the small and large handrails as illustrated. Secure the large handrails with the screws provided. Leave the small handrails floating.

4) Fasten the access panel with the screws provided (see right).



2257 route 139  
Drummondville, Québec  
J2A 2G2

WWW.INNOVAPLAS.COM

### MANUFACTURER WARRANTY

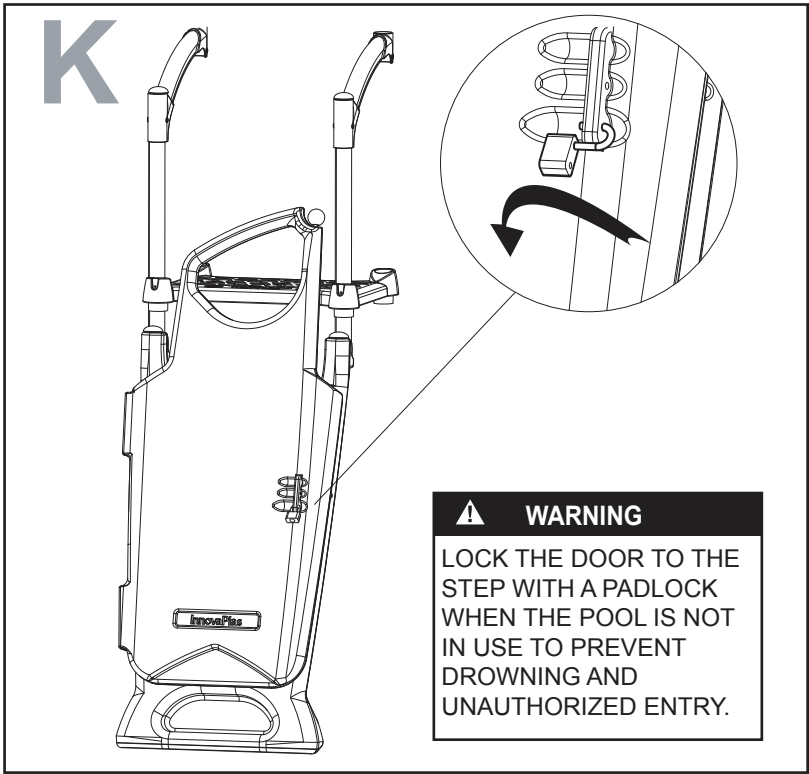
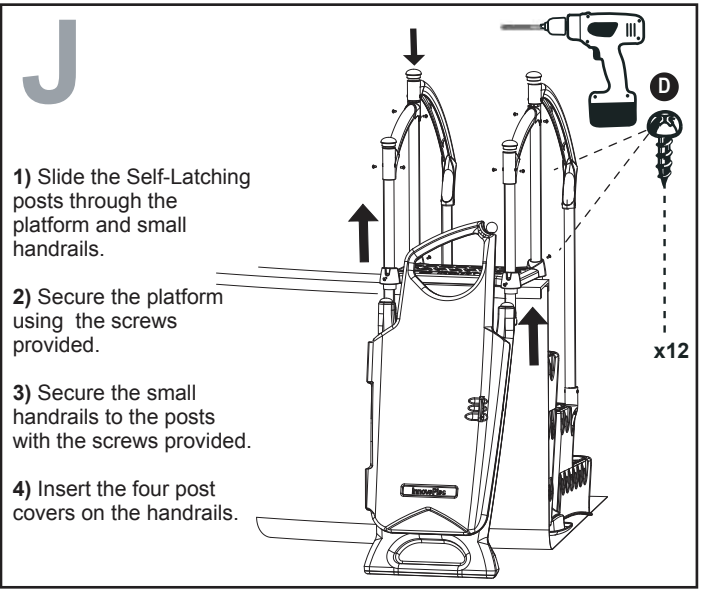
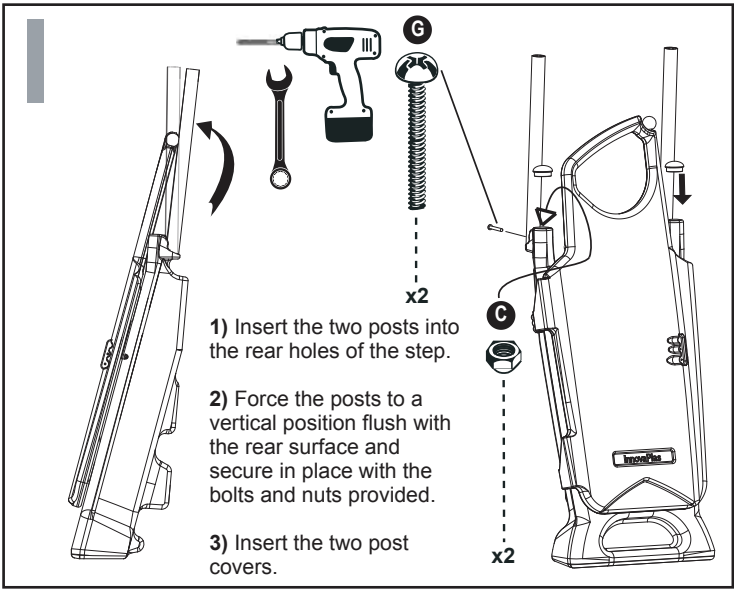
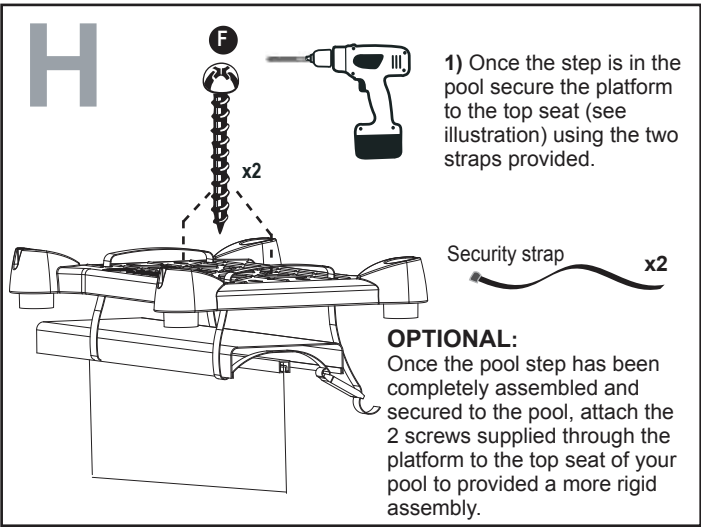
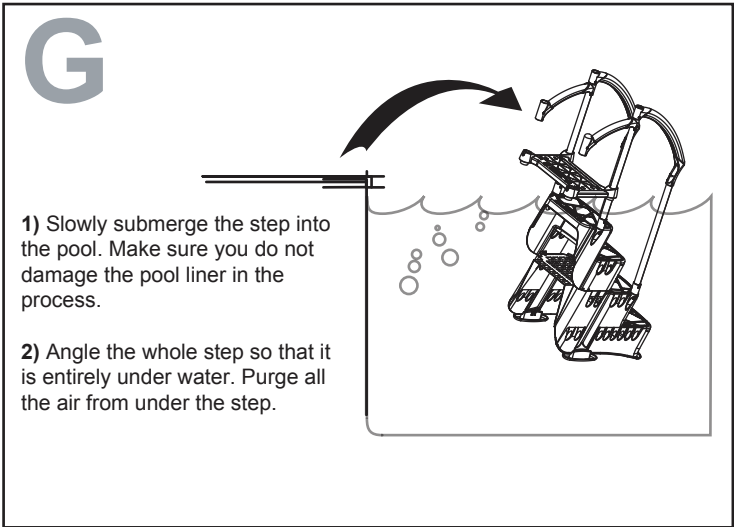
1 year on step and closure.  
1 year on hardware.

REV. 02/07/2023

PN:

PG:2

# BILTMOR 5050 WITH SELF-LATCHING 9600



**MANUFACTURER WARRANTY**

**1 year on step and closure.**  
**1 year on hardware.**