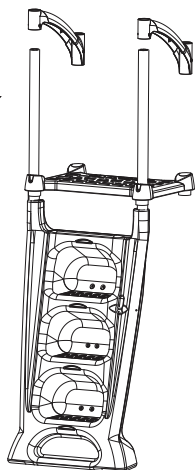


H2O WITH SELF-LATCHING 9600

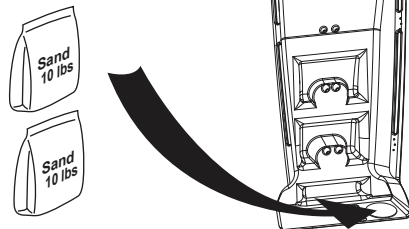
B

1) Insert the two handrails over the two front posts. Do not secure yet (the handrails will more than likely slide down the posts to rest on the platform).



C

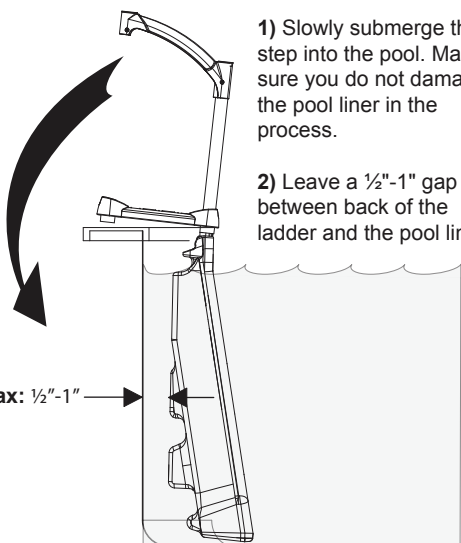
1) Fill the two bags provided with 10 lbs of sand each.
2) Insert the sand bags into the bottom of the H2O before submerging the step.



D

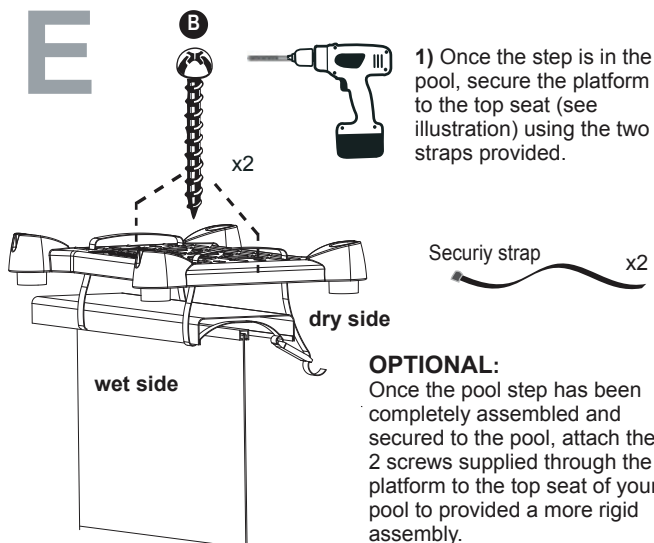
1) Slowly submerge the step into the pool. Make sure you do not damage the pool liner in the process.
2) Leave a ½"-1" gap between back of the ladder and the pool liner.

Caution Max: ½"-1"



E

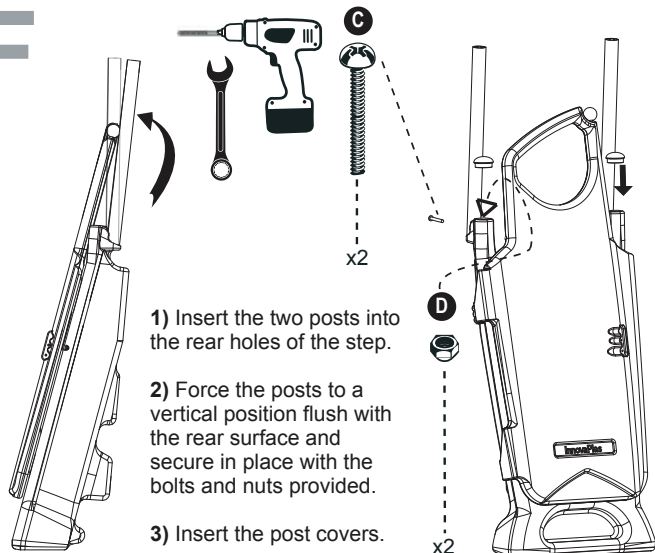
1) Once the step is in the pool, secure the platform to the top seat (see illustration) using the two straps provided.



OPTIONAL:
Once the pool step has been completely assembled and secured to the pool, attach the 2 screws supplied through the platform to the top seat of your pool to provided a more rigid assembly.

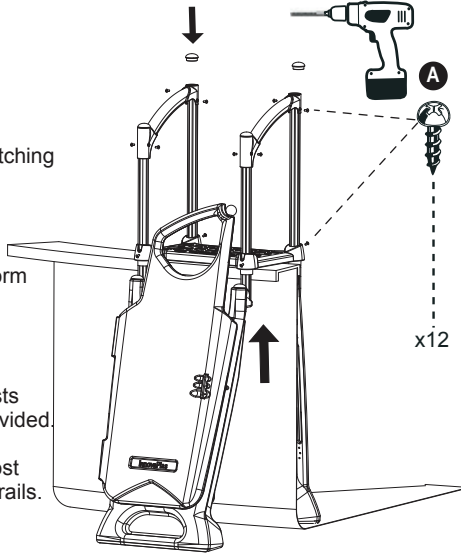
F

1) Insert the two posts into the rear holes of the step.
2) Force the posts to a vertical position flush with the rear surface and secure in place with the bolts and nuts provided.
3) Insert the post covers.



H

1) Slide the Self-Latching posts through the platform and small handrails.
2) Secure the platform using the screws provided.
3) Secure the small handrails to the posts with the screws provided.
4) Insert the four post covers on the handrails.



⚠ WARNING

LOCK THE DOOR TO THE STEP WITH A PADLOCK WHEN THE POOL IS NOT IN USE TO PREVENT DROWNING AND UNAUTHORIZED ENTRY.



2257 route 139
Drummondville, Québec
J2A 2G2

WWW.INNOVAPLAS.COM

MANUFACTURER WARRANTY

1 year on step and closure.
1 year on hardware.

REV. 10/27/2020

PN:

PG:2