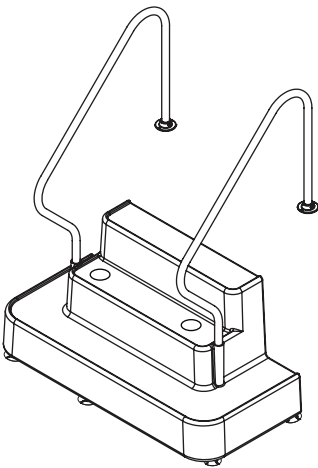


# INGROUND STEP

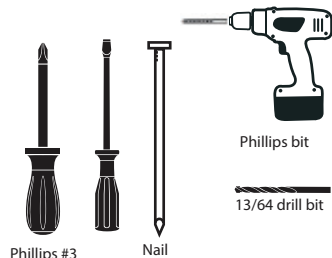


## WARNING

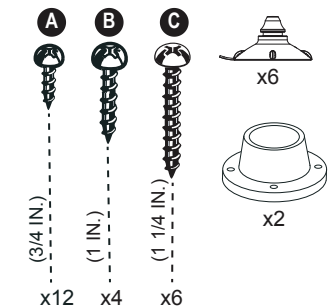
- Install the step on a flat surface.
- Do not jump or dive from the step.
- Remove the step from water when temperatures drop below freezing.
- In winter, the step should be stored in an area protected from snow.
- Never lift the step by its handrails.
- Use BATTERY operated tools to avoid electric shock near water.
- Ensure no corrosive materials are added to the step or hardware kit.
- The step must be installed per manufacturer's instructions.
- File off all stripped or sharp edges before assembly to avoid injuries and liner damage.
- The manufacturer is not responsible for damages or injuries caused by improper installation or use of product.
- To ease the installation of handrails and bolts, use a screwdriver to line up the holes.
- Maximum weight: 400 lbs / 180 kg.



### Required tools (not included)



### Contents of hardware kit 140-0015



### Ballast



x2

### Sand (not included)

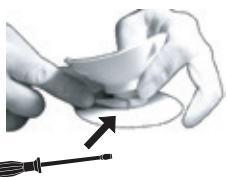


# A

Insert the Step Cups™ in the holes under the step.\*



**A1)** Insert half of the Step Cup mushroom ring in the hole, at a 45 degree angle.



**A2)** With a flat screwdriver, compress the Step Cup mushroom ring while pushing it into the hole.



**A3)** Twist the Step Cup to ensure that the mushroom ring has entirely cleared the wall thickness. If it has, the suction cup should rotate freely.



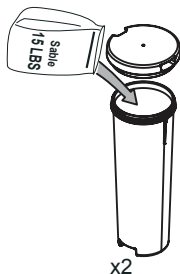
\* View step cups installation tips on YouTube:  
<https://www.youtube.com/watch?v=W5RH1VNxpu0>

## CAUTION

Failing to install the Step Cup™ system will greatly reduce the steadiness of the step and will void the manufacturer warranty.

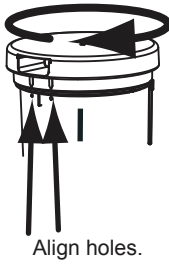
# B

**1)** Fill each ballast with sand. The approximate weight should be 15 lbs per ballast.



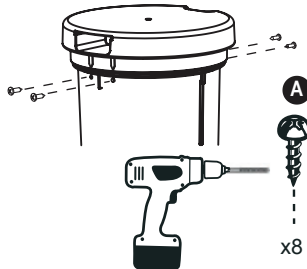
x2

**2)** Screw the lid in place and align the cover ribs with the holes in the ballast base.



Align holes.

**3)** Fasten the cover to the ballast base with the screws provided (four per cover).



x8

**4)** Slowly submerge the step into the pool.

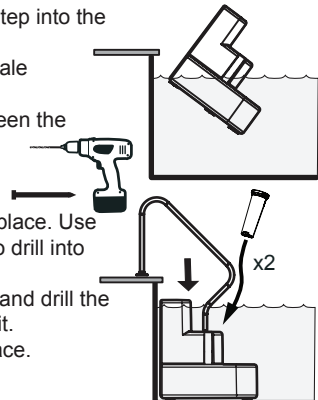
**5)** Place the step in its finale location.

**6)** Keep a gap of 1" between the step and the pool wall.

**7)** Insert the handrails in place. Use a nail to mark the holes to drill into the handrails.

**8)** Remove the handrails and drill the holes with a 13/64" drill bit.

**9)** Drop the ballasts in place.



### MANUFACTURER WARRANTY

**1 year on pool step.  
1 year on hardware.**



2257 route 139  
Drummondville, Québec  
J2A 2G2

WWW.INNOVAPLAS.COM

REV. 06/20/2023

PN:

PG:2